

TOTAL FILTERED WATER SOLUTIONS



# **WATER CHILLER RANGE**







# AL-IC8 WATER CHILLER

REMOTE/UNDERSINK CHILLER



- 💧 Lead and Copper-Free Construction
- 💧 1.9L Stainless Steel Chilling Tank
- 💧 8L Per Hour Cooling Capacity
- 💧 Stainless Steel Internal Construction
- 💧 Powder-Coated Corrosion Resistant Cabinet
- 💧 8-Cup Initial Draw-off
- 💧 Dual, Fan Assisted Static Condensers
- 💧 3-Year Comprehensive Warranty
- 💧 Complete with the Aqua L'eau Dual Water Filtration System



**WaterMark**  
ATSS200.105  
WM-022458



[www.aqualeau.com.au](http://www.aqualeau.com.au)

@aqualeau\_



# AL-IC8 WATER CHILLER

## REMOTE/UNDERSINK CHILLER

With its 8-litre per hour cooling capacity, the Aqua L'eau AL-IC8 is proof that good things come in small packages. Due to the compact design, energy efficiency and quiet operation the AL-IC8 Undersink chiller is the obvious choice for household applications and offices alike.

### SPECIFICATIONS

**CABINET:** The cabinet is a corrosion resistant, high polymer polyester coated steel panel.

**COLD WATER TANK:** 1.7-litre fully insulated, 304 stainless steel tank. The drain plug and seal are removable for servicing.

**REFRIGERATION SYSTEM:** This fan assisted, static condenser system utilises R134a refrigerant which is non toxic, non-flammable and non ozone depleting. Refrigerant flow is controlled by capillary tube, which has no moving parts. The compressor is protected by an automatic overload, is lifetime lubricated and hermetically sealed.

**WATER FILTRATION:** An external Aqua L'eau Dual Water Filtration System reduces sediment, chemicals, organic compounds and impurities, which can adversely affect the quality and taste of your drinking water.

### INSTALLATION

To be installed in accordance with local plumbing laws. Failure to install a certified Pressure Limiting Valve will void warranty.

**GENERAL:** The Aqua L'eau AL-IC8 can be installed in small spaces with adequate ventilation and can be used in conjunction with most inline filter systems. The AL-IC8 must be professionally installed with either a vented tap or the included kit, which contains a pressure reducing valve (PRV), pressure-limiting valve (PLV), shutoff valve, stainless steel connectors and a drain clamp.

**PLUMBING CONNECTIONS:** Both the inlet and outlet are recessed 1/4" stainless steel pipes. Quick connect stainless steel fittings are included in the above mentioned installation kit.

**ELECTRICAL:** Certificate number 202240. 220-240v 50hz single phase. Full load current is 0.8 amps. A 1.5-metre power cord is supplied.

### COOLING PERFORMANCE:

8 litres per hour at 8-10°C

Cooling Speed: From 27°C to 8°C in 20 minutes

Draw Off Capacity: 8 cups (150ml) below 10°C

### SHIPPING WEIGHTS & DIMENSIONS

AL-IC8	WEIGHT	WIDTH	DEPTH	HEIGHT
NET	12.5kg	21cm	41cm	27cm
PACKED	14kg	23cm	46cm	30cm

### WARRANTY

The Aqua L'eau AL-IC8 undersink chiller is covered by a 3-year comprehensive warranty (copy available on request). The warranty provides comprehensive parts and labour coverage for the period of 3 years from the date of original sale.



### FAUCET OPTIONS







# FREESTANDING WATER CHILLER WITH BUBBLER & CARAFE FILLER

AL-DFSA120 • AL-DFSA121

The AL-DFSA120 and AL-DFSA121 water chillers provide a continuous supply of chilled mains water, offering an environmentally friendly alternative to bottled water and reducing the use of plastic packaging. Designed for versatility, these chillers suit all applications, including schools, universities, gymnasiums, municipal buildings, public areas and workplaces.

- Up to 18L of Chilled Water Per Hour
- 4L Storage Tank
- Hygienic, Polished Stainless Steel Tops Designed for Rapid Draining
- Adjustable Levelling Feet
- Stainless Steel Storage Tank
- FDA-Approved Internal Pipework
- Side Carry Handles and Removable Front Access Panel for Easy Installation
- Environmentally Friendly R134A Refrigerant
- Includes Internal Waste Trap
- Complete with the Aqua L'eau Dual Water Filtration System



[www.aqualeau.com.au](http://www.aqualeau.com.au)

@aqualeau\_

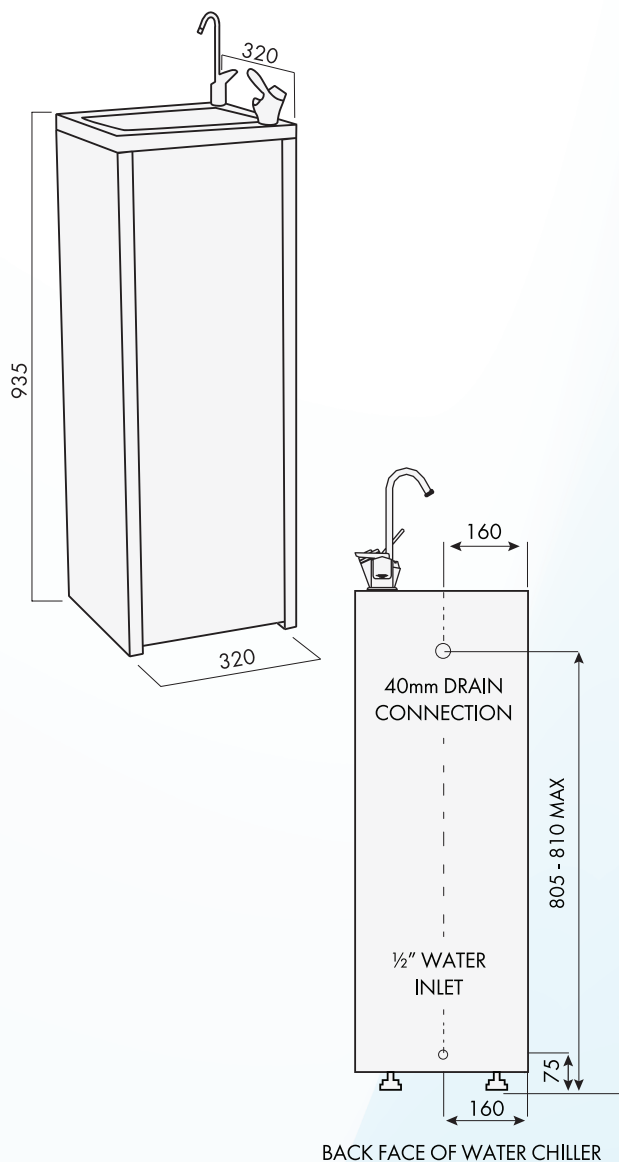


# FREESTANDING WATER CHILLER WITH BUBBLER & CARAFE FILLER

AL-DFSA120 · AL-DFSA12

## TECHNICAL INFORMATION

CHILLED WATER PRODUCTION	up to 18 Litres/hour
RECOMMENDED WATER SUPPLY PRESSURE	50-500 kPa (Use of pressure reduction valve is recommended if inlet pressure may exceed 500 kPa)
POWER SUPPLY	230-240V / 50 Hz
POWER CONNECTION	3 pin 10 A plug with 2m lead
IP RATING	IP23
WATER INLET CONNECTION	1/2" BSP male
WATER DRAIN CONNECTION	40mm DWV PVC
STORAGE TANK	4 Litres
COMPRESSOR SIZE	362 W
CONDENSOR	Wire tube
REFRIGERANT	R134A
CLIMATE CONDITION	SN.N *
NET WEIGHT	28kg



\*Suitable for use in ambient temperatures of 10°C to 32°C

**WATER FILTRATION:** An external Aqua L'eau Dual Water Filtration System reduces sediment, chemicals, organic compounds and impurities, which can adversely affect the quality and taste of your drinking water.

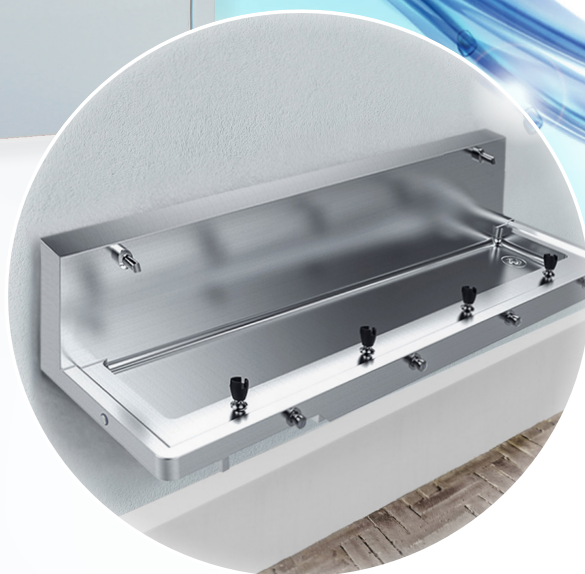
## PRODUCT CODES

AL-DFSA120	Freestanding Water Chiller with Bubbler and Carafe Filler - White Powder Coat
AL-DFSA121	Freestanding Water Chiller with Bubbler and Carafe Filler - Stainless Steel



# AL-IC1000 WATER CHILLER

REMOTE COOLING & STORAGE SYSTEMS



- 60L Storage
- Stainless Steel Reservoir
- Cools 120L Per Hour
- Serves up to 6 Outlets
- Heavy-Duty Construction
- Designed and Built in Australia
- Superior Insulation and Energy Efficiency
- 12-Month Comprehensive Wholesale Warranty
- Ideal for Schools, Mines, Sports Facilities, Dining Halls  
and other High Demand Applications



WaterMark  
WMTS-105:2016  
WM-022633



[www.aqualeau.com.au](http://www.aqualeau.com.au)

@aqualeau\_



# AL-IC1000 WATER CHILLER

## REMOTE COOLING & STORAGE SYSTEMS

### GENERAL INFORMATION

The Aqua L'eau AL-IC1000 water cooling and storage system provides enough cold water to cope with the most extreme periods of high demand. The combination of extreme cooling performance and a significant volume of stored cold water make these coolers ideal for many applications such as public access areas, schools, mines, construction sites and sporting venues.

The AL-IC1000 is a remote cooling system that can be installed in-line prior to whichever tapware is most appropriate for the application. Whether that be a single faucet for high volume draw-off, or a trough with up to 6 bubbler faucets for schools or sporting clubs (see picture for example).

### COOLING SYSTEM

The AL-IC1000's cooling system features industry-leading technology with a hermetically sealed dynamic condensing unit. Superior insulation prevents heat gain, enhancing energy efficiency. The sealed unit contains 330 grams of ozone-friendly R134a refrigerant.

### INSTALLATION

The universal design of the AL-IC1000 allows for easy installation. Commonly installed in-line to supply cooled water to bubbler troughs (shown below), it can also support varied applications. The included 1.2-metre cord with 3-pin plug connects to any Australian Standard 240V, 50Hz single-phase power outlet. Plumbing connections (inlet and outlet) are 1/2" male BSP threaded.

To install the AL-IC1000, position it upright in a sheltered area away from the elements on a flat, stable surface. Ensure adequate ventilation space and easy access to the service panel for optimal operation.

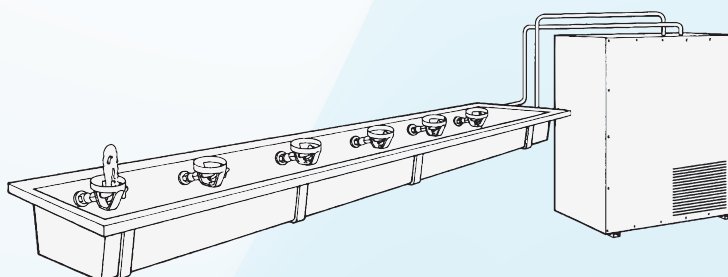
### WARRANTY

The AL-IC1000 is covered by the Aqua L'eau Warranty, (copy available on request). This provides 12 months of comprehensive coverage, inclusive of parts and labour.

### CAPACITY

MODEL	AL-IC1000
DESCRIPTION	REMOTE CHILLER
RESERVOIR VOLUME	60 LITRES
LITRES / HOUR	120 LPH
OUTLETS	UP TO 6
PACKED WEIGHT	55kg
UNPACKED DIMENSIONS	530W X 870D X 640H
UNPACKED WEIGHT	50kg

Typical installation of Remote AL-IC1000 with bubbler trough, (not furnished with cooler).









[www.aqualeau.com.au](http://www.aqualeau.com.au)

📷 aqualeau\_